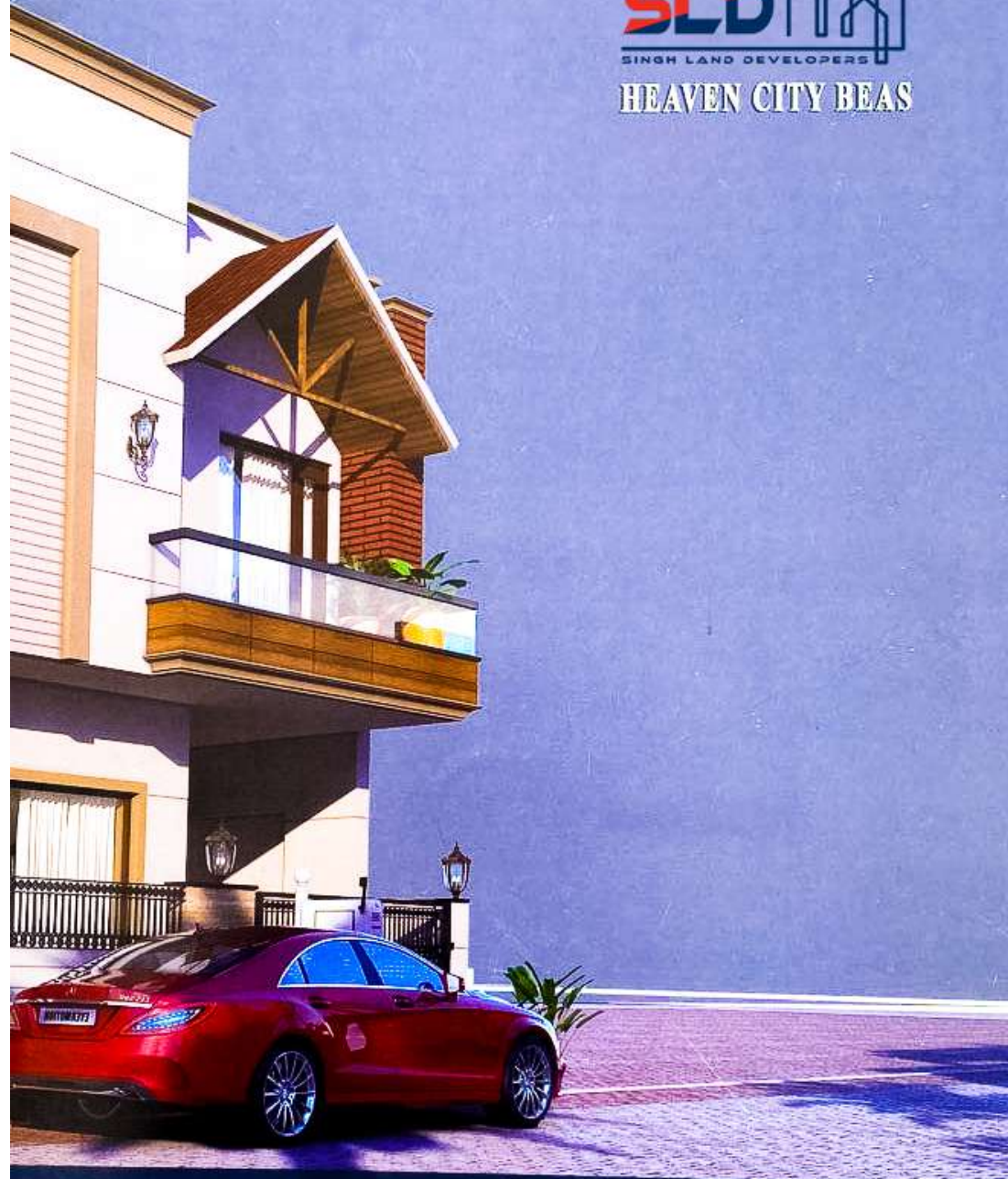


SLD 
SINGH LAND DEVELOPERS
HEAVEN CITY BEAS



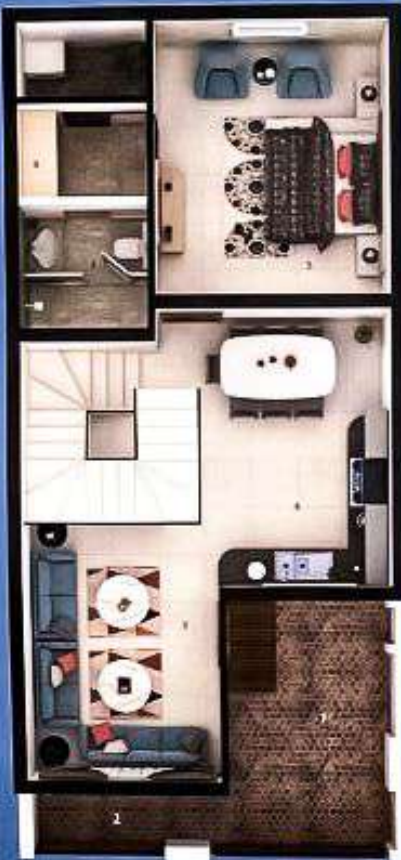
INDEPENDENT 3BHK VILLA



SPECIFICATIONS

STRUCTURE	Load Bearing Structure
LIVING/DINING LOBBY FLOOR	Vitrified Double Charge Tiles, Wall :- Plaster Paint , Ceiling :- Oil Bound Distemper
WINDOWS	Windows are made up of red merandi
TOILETS	Walls:- Combination of Ceramic Tiles upto 7'-0" Height. Floor :- Anti Skid Ceramic Floor Tiles
BEDROOMS	Vitrified Double Charge Tiles, Wall :- Plaster Paint Ceiling :- Oil Bound Distemper
DOORS	Main Jalli Door :- Polished Door With Teak ply & Jalli Other Door Quality :- Doors Used Are Flush Door with Mica.
EXTERNAL FINISHES	Apex Paint On Walls And Tile Cladding
POWER BACKUP	100% power Backup in Common Areas
BALCONY	Floor:- Anti Skid Ceramic Floor Tiles, Plaster Paint On Walls & Dry Distemper On Roof.
KITCHEN	Wall :- Ceramic Tiles Upto 2'-0" Above Counter & Plaster paint In Ther Remaining Area. Floor:- Anti Skid Ceramic Floor Tiles. Counter:- Granite Top with Stainless Steel Sink
ELECTRICAL WORK	Electrical Wires With Copper Wires Cooper Wires in Concealed Pvc Conduits, Provision Shall Be Made For Sufficient Lighting & Power Points. Switches & Sockets In Each Bedroom, drawing/Dining And Lobby. Provision Of Split Ac in Each Bedroom
CHILDREN PARK	24 HOURS SECURITY CCTV CAMERA

- 
 AMPLE CAR PARKING
- 
 WIDE ROAD
- 
 RAIN WATER HARVESTING
- 
 TRACK
- 
 POWER BACKUP
- 
 24/7 SECURITY



GROUND FLOOR PLAN

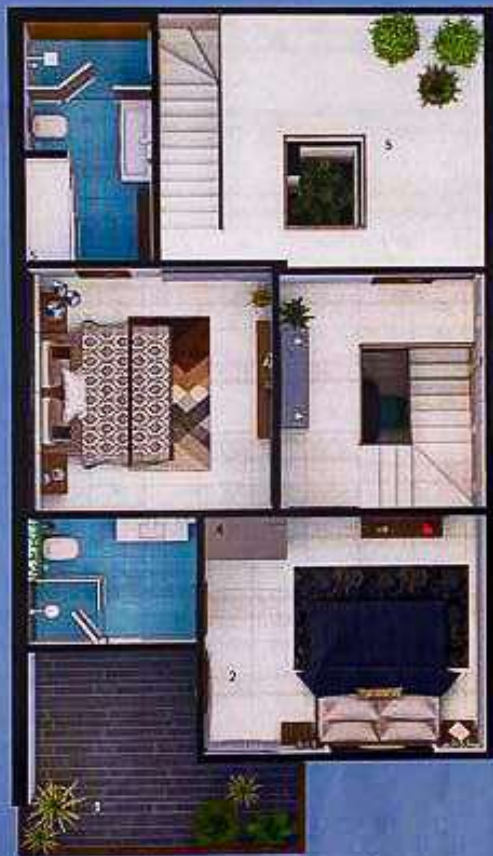
1. PORCH - 9'-0" WIDE
2. FRONT OPEN - 4'-0" WIDE
3. LIVING AREA - 10'-11" X 14'-0"
4. KITCHEN CUM DINING - 9'-3" X 14'-10 1/2"
5. BEDROOM - 12'-6" X 14'-8"
6. DRESS - 7'-0" X 5'-0"
7. TOILET - 7'-0" X 6'-8"



FIRST FLOOR PLAN

1. BALCONY - 13'-9" X 4'-0"
2. TOILET - 6'-6" X 8'-4"
3. DRESS - 6'-6" X 8'-4"
4. BEDROOM - 13'-0" X 13'-7"
5. LOBBY - 10'-2" X 9'-9"
6. BEDROOM - 12'-6" X 16'-9"
7. TOILET - 7'-0" X 7'-8"





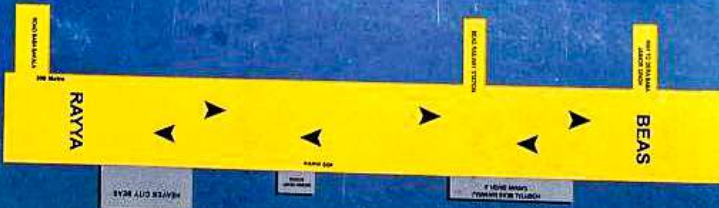
GROUND FLOOR PLAN

1. PORCH - 11'-6" X 13'-9"
2. SITTING - 10'-0" X 10'-1 1/2"
3. LOBBY - 14'-0" X 11'-6"
4. KITCHEN - 7'-6" X 12'-9"
5. BEDROOM - 12'-0" X 12'-0"
6. DRESS - 9'-6" X 5'-0"
7. TOILET - 5'-6" X 6'-7 1/2"
8. GREEN AREA - 3'-7 1/2" X 6'-7 1/2"

FIRST FLOOR PLAN

1. BALCONY - 8'-0" X 7'-6"
2. BEDROOM - 13'-6" X 11'-7 1/2"
3. TOILET - 8'-0" X 6'-1 1/2"
4. BEDROOM - 11'-7 1/2" X 11'-10 1/2"
5. TOILET/DRESS - 6'-0" X 11'-7 1/2"
6. REAR - 12'-9" X 12'-4 1/2"
7. LOBBY - 9'-10 1/2" X 11'-6"





📍 G.T. ROAD, BEAS

☎ +91 98760 61177

☎ +91 98760 61188

☎ +91 98760 61122

✉ heavencity983@gmail.com